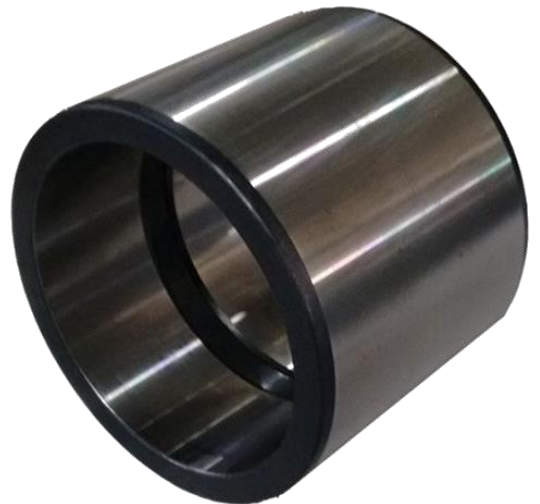




Mercedes-Benz

Actros MP4 Parts List

Nov_2020



Juffali Industrial Products Company (JIPCO)



0569300552



Actros MP4 Parts List

| Line | Part Number | Description | Product Group | Qty. | Gross Selling Price | Order Quantity |
|------|---------------|---------------------------|---------------|------|---------------------|----------------|
| 1 | A000091221064 | VALVE | Engine | 3 | 609.39 | |
| 2 | A0002361780 | PROFILE SEAL | Engine | 5 | 43.98 | |
| 3 | A0003503605 | RS STRUT | Chassis | 6 | 2,463.42 | |
| 4 | A0004211530 | TS DRUM BRAKE LINING | Chassis | 75 | 1,132.64 | |
| 5 | A0005447611 | MARKER LAMP | Chassis | 50 | 91.03 | |
| 6 | A0009906005 | STUD BOLT | Body | 25 | 18.07 | |
| 7 | A0009922350 | BEARING SLEEVE | Body | 8 | 22.31 | |
| 8 | A001540533664 | ELECTRICAL LINE | Chassis | 3 | 111.96 | |
| 9 | A0025447390 | LENS | Chassis | 14 | 146.65 | |
| 10 | A0028119033 | MIRROR GLASS | Body | 2 | 389.52 | |
| 11 | A002826217864 | REFLECTOR | Body | 13 | 38.52 | |
| 12 | A0035446303 | TAIL LAMP | Chassis | 2 | 755.29 | |
| 13 | A0039970547 | SEALING RING | Body | 33 | 46.35 | |
| 14 | A0040946804 | AIR FILTER INSERT | Engine | 84 | 871.40 | |
| 15 | A0044311506 | BRAKE VALUE SENSOR | Chassis | 2 | 2,614.42 | |
| 16 | A0049932396 | POLY-V-BELT | Body | 12 | 140.60 | |
| 17 | A0049971371 | SCREW-IN FITTING | Body | 2 | 54.96 | |
| 18 | A0065427918 | RPM SENSOR | Chassis | 1 | 691.56 | |
| 19 | A0095423318 | TRAVEL SENSOR | Chassis | 6 | 1,563.98 | |
| 20 | A0095455124 | STEERING COLUMN SWITCH | Chassis | 2 | 1,371.31 | |
| 21 | A0125421017 | SENDER UNIT | Chassis | 4 | 331.79 | |
| 22 | A0129973747 | SEALING RING | Body | 11 | 92.70 | |
| 23 | A0149970546 | SEALING RING | Body | 19 | 266.04 | |
| 24 | A0159974946 | RADIAL SHAFT SEALING RING | Body | 8 | 131.35 | |
| 25 | A024997894564 | SEALING RING | Body | 12 | 64.46 | |
| 26 | A028250570180 | SINGLE-PLATE DRY CLUTCH | Chassis | 1 | 7,150.19 | |





Actros MP4 Parts List

| Line | Part Number | Description | Product Group | Qty. | Gross Selling Price | Order Quantity |
|------|---------------|---------------------------|---------------|------|---------------------|----------------|
| 27 | A028250730180 | SINGLE DRY DISC CLUTCH | Chassis | 3 | 7,150.19 | |
| 28 | A028250830180 | SINGLE DRY DISC CLUTCH | Chassis | 1 | 7,150.19 | |
| 29 | A3554230901 | BRAKE DRUM | Chassis | 82 | 600.00 | |
| 30 | A3854210152 | SPACER DISK | Chassis | 6 | 15.96 | |
| 31 | A4570910180 | GASKET | Engine | 22 | 35.62 | |
| 32 | A4570980080 | GASKET | Engine | 23 | 48.41 | |
| 33 | A4571310180 | SEAL | Engine | 29 | 75.05 | |
| 34 | A457132090564 | DRIVE GEAR | Engine | 2 | 1,324.96 | |
| 35 | A4600960299 | EXHAUST GAS TURBOCHARGER | Engine | 1 | 9,636.19 | |
| 36 | A4601420080 | GASKET | Engine | 94 | 49.63 | |
| 37 | A4702000201 | COOLANT PUMP | Engine | 4 | 2,634.25 | |
| 38 | A470997025264 | EXHAUST GAS HOSE | Body | 1 | 115.17 | |
| 39 | A4711800043 | OIL SPRAY NOZZLE | Engine | 1 | 185.22 | |
| 40 | A4722021219 | GUIDE PULLEY | Engine | 6 | 399.58 | |
| 41 | A4731800009 | TS OIL FILTER ELEMENT | Engine | 176 | 188.57 | |
| 42 | A5411870080 | GASKET | Engine | 30 | 28.03 | |
| 43 | A6584210001 | BRAKE DRUM | Chassis | 67 | 755.57 | |
| 44 | A9424230212 | BRAKE DISK | Chassis | 115 | 912.38 | |
| 45 | A9463560127 | COVER PLATE | Chassis | 32 | 44.94 | |
| 46 | A9483202605 | LEAF SPRING, REAR AXLE | Chassis | 1 | 7,808.44 | |
| 47 | A9603170031 | SHIELD | Chassis | 3 | 1,600.38 | |
| 48 | A9603201537 | STABILIZER BAR SHACKLE | Chassis | 1 | 876.16 | |
| 49 | A9603201717 | AIR SPRING BELLOWS | Chassis | 1 | 2,565.75 | |
| 50 | A9603232385 | ELASTOMER BEARING | Chassis | 2 | 148.47 | |
| 51 | A9603232885 | ELASTOMER BEARING | Chassis | 6 | 240.18 | |
| 52 | A9603268904 | SHOCK ABSORBER, REAR AXLE | Chassis | 1 | 1,417.14 | |





Actros MP4 Parts List

| Line | Part Number | Description | Product Group | Qty. | Gross Selling Price | Order Quantity |
|------|-----------------|---------------------|---------------|------|---------------------|----------------|
| 53 | A9604210412 | BRAKE DISK | Chassis | 84 | 1,154.66 | |
| 54 | A960501590364 | EXPANSION RESERVOIR | Chassis | 6 | 2,320.16 | |
| 55 | A9605401301 | OPERATING PANEL | Chassis | 1 | 523.47 | |
| 56 | A9605530001 | HYDRAULIC HAND PUMP | Chassis | 3 | 3,012.65 | |
| 57 | A9605530203 | FILTER ELEMENT | Chassis | 21 | 268.91 | |
| 58 | A9605532682 | HIGH-PRESSURE HOSE | Chassis | 1 | 221.36 | |
| 59 | A9605533282 | HIGH-PRESSURE HOSE | Chassis | 1 | 221.36 | |
| 60 | A9606603228 | STEP PLATE | Body | 2 | 2,009.52 | |
| 61 | A9606662228 | STEP PLATE | Body | 4 | 107.09 | |
| 62 | A96066629037277 | ENTRANCE | Body | 2 | 1,437.18 | |
| 63 | A96066629039135 | ENTRANCE | Body | 1 | 1,620.22 | |
| 64 | A96066675037277 | ENTRANCE | Body | 1 | 1,962.53 | |
| 65 | A9606711310 | WINDSHIELD | Body | 1 | 1,497.36 | |
| 66 | A9606780020 | SEALING FRAME | Body | 1 | 212.76 | |
| 67 | A9607201246 | WINDOW LIFTER | Body | 3 | 817.48 | |
| 68 | A9607213380 | DOOR SEALING | Body | 4 | 474.78 | |
| 69 | A96075003187G99 | TRIM GRILLE | Body | 4 | 1,452.26 | |
| 70 | A9608102019 | MIRROR | Body | 3 | 4,021.49 | |
| 71 | A9608104716 | MIRROR, OUTER | Body | 1 | 3,967.56 | |
| 72 | A9608110707 | COVER | Body | 2 | 199.98 | |
| 73 | A9608111407 | COVER | Body | 2 | 99.90 | |
| 74 | A9608111507 | COVER | Body | 4 | 99.90 | |
| 75 | A9608112407 | COVER | Body | 13 | 32.74 | |
| 76 | A9608112507 | COVER | Body | 15 | 32.74 | |
| 77 | A9608170016 | MERCEDES STAR | Body | 2 | 228.30 | |
| 78 | A9608200239 | LAMP UNIT | Body | 1 | 1,623.52 | |





Actros MP4 Parts List

| Line | Part Number | Description | Product Group | Qty. | Gross Selling Price | Order Quantity |
|------|-----------------|-------------------------|---------------|------|---------------------|----------------|
| 79 | A9608202756 | END-OUTLINE MARKER LAMP | Body | 1 | 204.99 | |
| 80 | A9608202856 | END-OUTLINE MARKER LAMP | Body | 1 | 204.99 | |
| 81 | A9608203356 | CLEARANCE LAMP | Body | 1 | 204.99 | |
| 82 | A9608203456 | CLEARANCE LAMP | Body | 1 | 204.99 | |
| 83 | A9608800525 | FLAP | Body | 3 | 218.14 | |
| 84 | A96088022917G99 | BUMPER, FRONT | Body | 3 | 2,351.13 | |
| 85 | A9608807385 | COVER GRILL | Body | 3 | 80.51 | |
| 86 | A96088077727277 | BUMPER, FRONT | Body | 3 | 1,719.66 | |
| 87 | A96088521747G99 | FACING | Body | 6 | 122.37 | |
| 88 | A96088522747G99 | FACING | Body | 8 | 122.37 | |
| 89 | A96088541847G99 | COVER GRILL | Body | 1 | 168.59 | |
| 90 | A96088542847G99 | COVER GRILL | Body | 4 | 168.59 | |
| 91 | A96088550257G99 | FRONT SPOILER | Body | 2 | 886.35 | |
| 92 | A96088566537G99 | COVER GRILL | Body | 4 | 151.83 | |
| 93 | A96088567259135 | FRONT SPOILER | Body | 1 | 1,121.96 | |
| 94 | A96088569257G99 | FRONT SPOILER | Body | 6 | 273.49 | |
| 95 | A96088570257G99 | FRONT SPOILER | Body | 6 | 273.49 | |
| 96 | A96088570537G99 | COVER GRILL | Body | 5 | 625.24 | |
| 97 | A9608858674 | FACING | Body | 5 | 43.85 | |
| 98 | A9608858774 | FACING | Body | 6 | 43.85 | |
| 99 | A96166649019135 | ENTRANCE | Body | 2 | 2,408.53 | |
| 100 | A96166650019135 | ENTRANCE | Body | 2 | 2,408.53 | |
| 101 | A96166653019135 | ENTRANCE | Body | 4 | 2,408.53 | |
| 102 | A9618208961 | LAMP UNIT | Body | 6 | 1,789.41 | |
| 103 | N000000001085 | SEALING RING | Body | 60 | 2.47 | |

